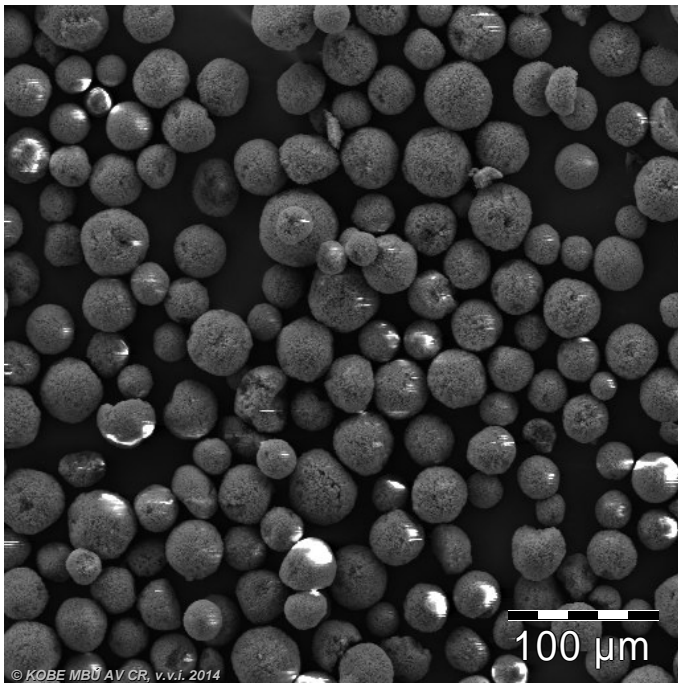
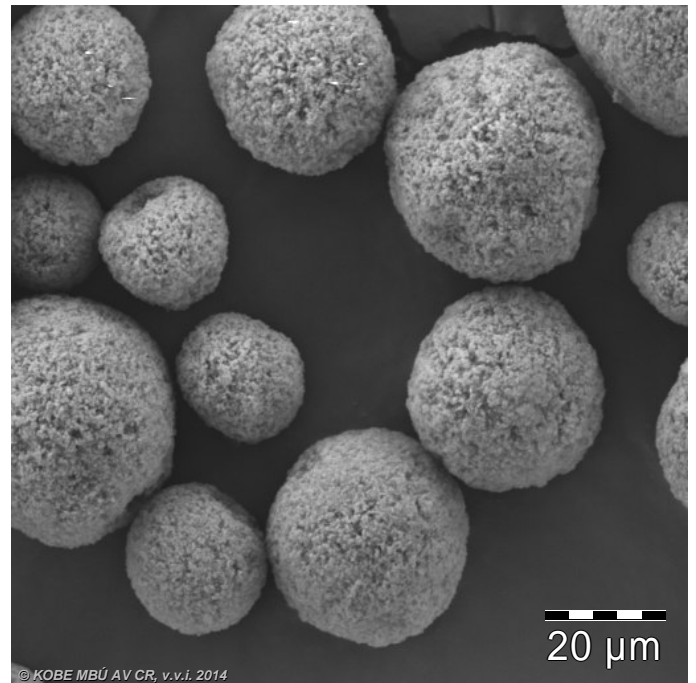


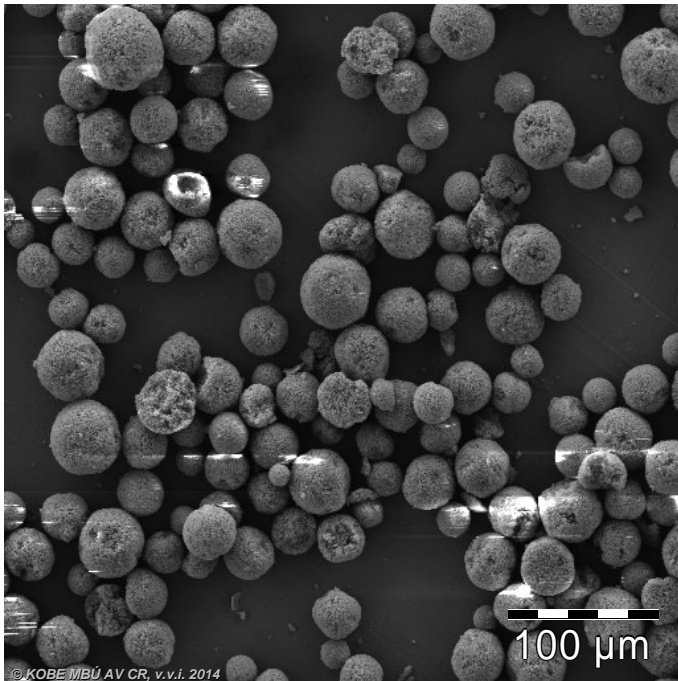
580A/1-POROS-ctrl; Fig.: 15.bmp



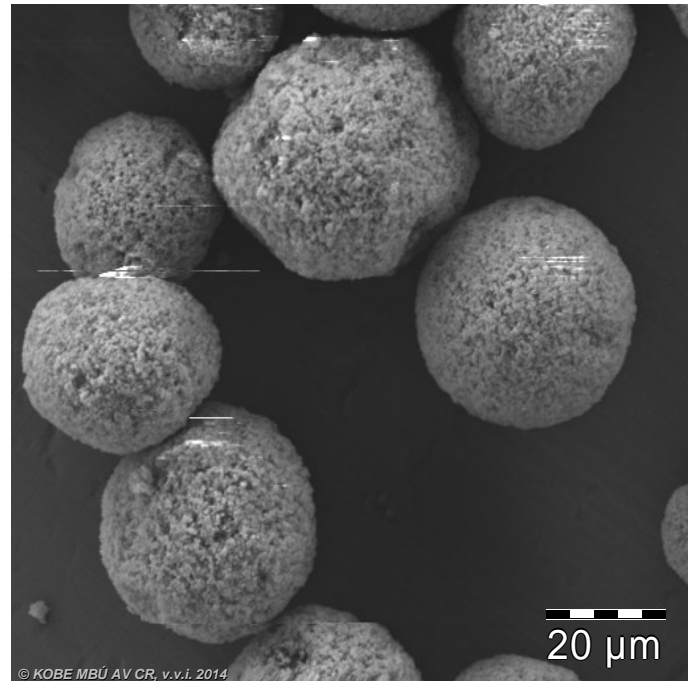
580A/1-POROS-ctrl; Fig.: 16.bmp



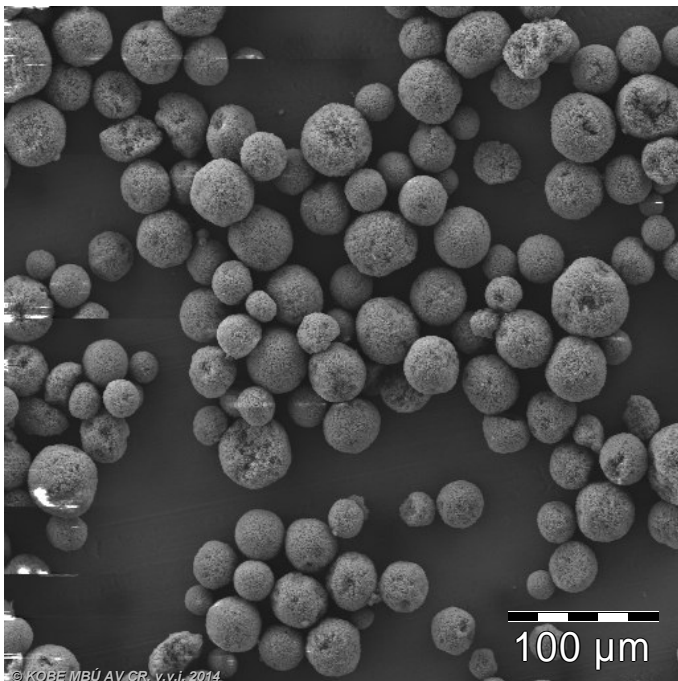
580A/2-POROS--iP new; Fig.: 17.bmp



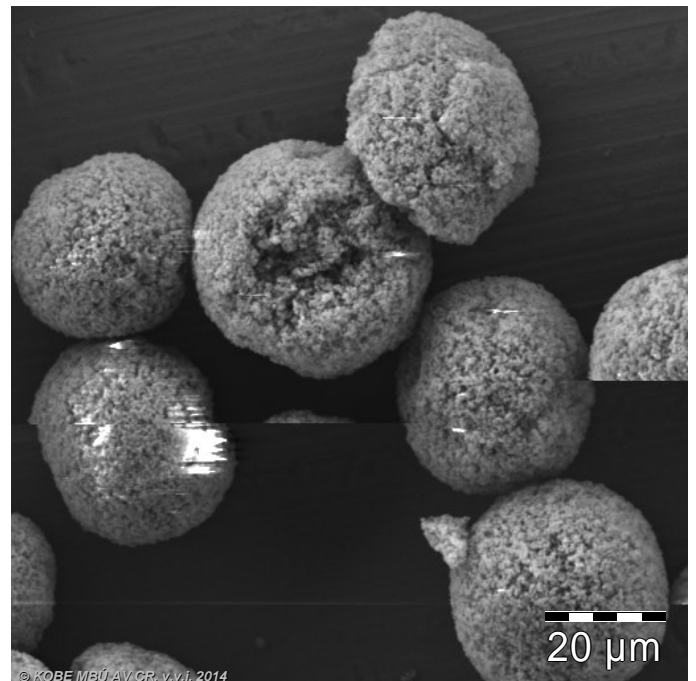
580A/2-POROS--iP new; Fig.: 18.bmp



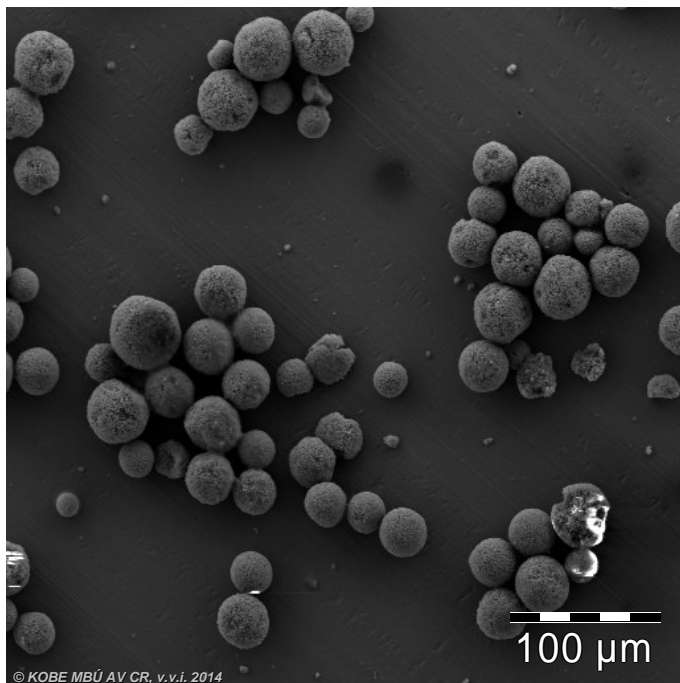
580A/6-POROS--5500psi; Fig.: 19.bmp



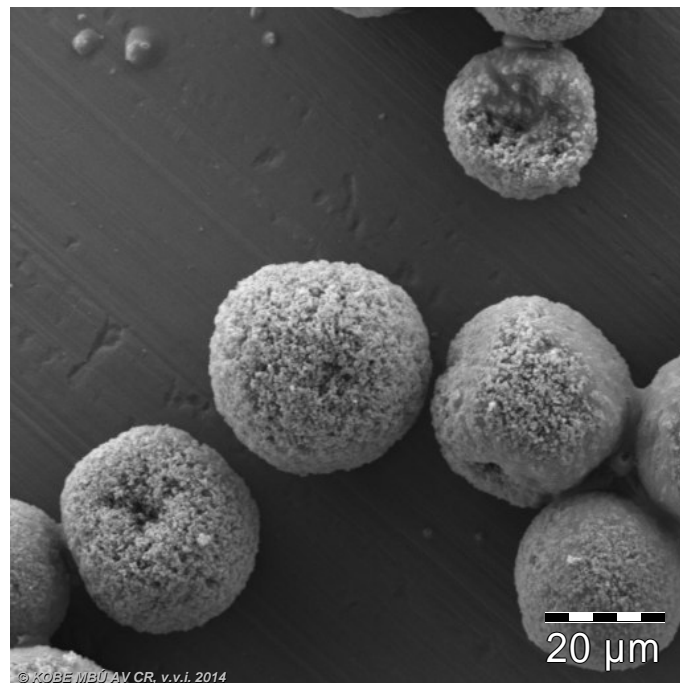
580A/6-POROS--5500psi; Fig.: 20.bmp



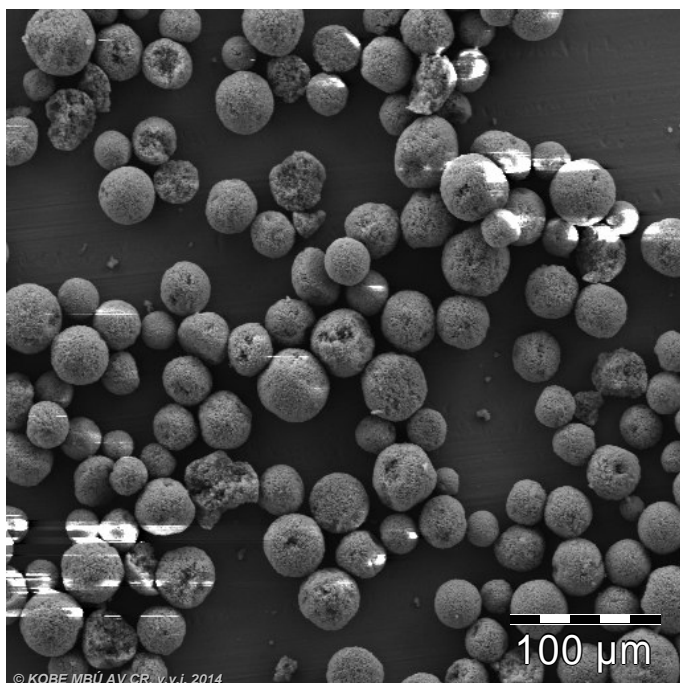
580B/3-POROS--irN new; Fig.: 21.bmp



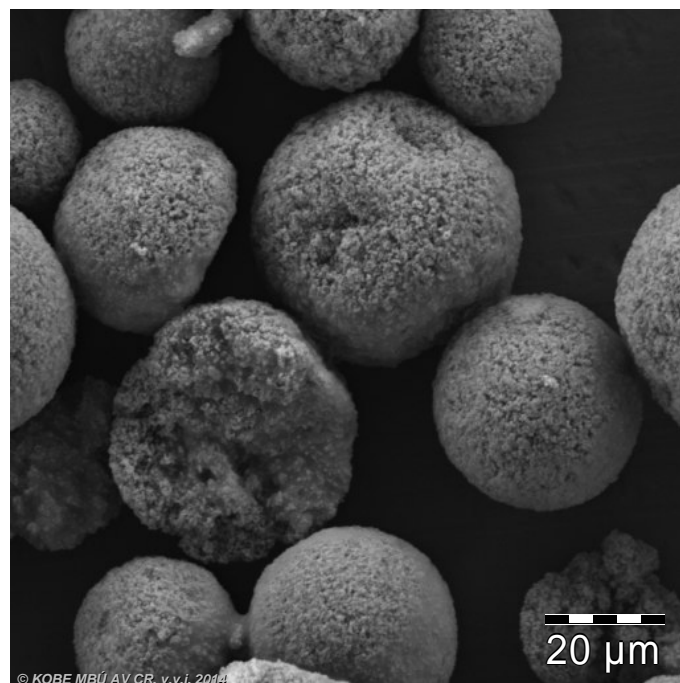
580B/3-POROS--irN new; Fig.: 22.bmp



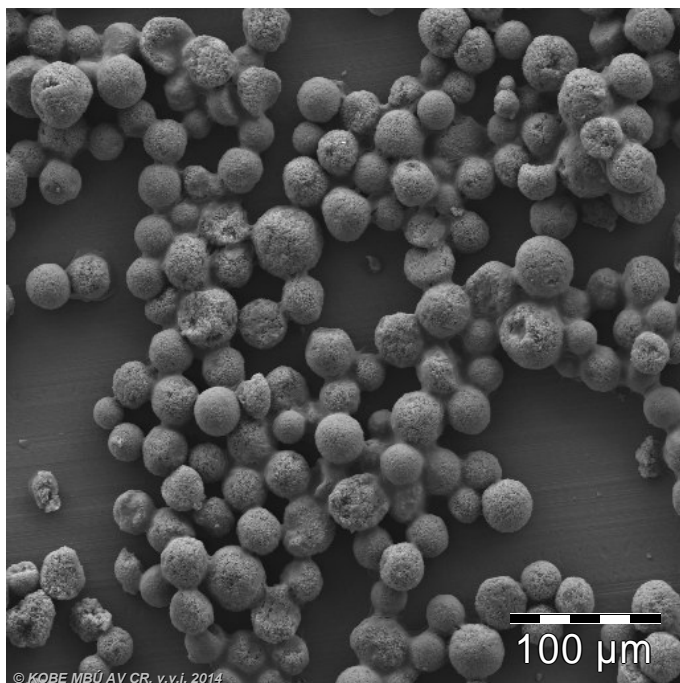
580B/4-POROS--iP used; Fig.: 23.bmp



580B/4-POROS--iP used; Fig.: 24.bmp



580B/5-POROS--irN used; Fig.: 25.bmp



580B/5-POROS--irN used; Fig.: 26.bmp

