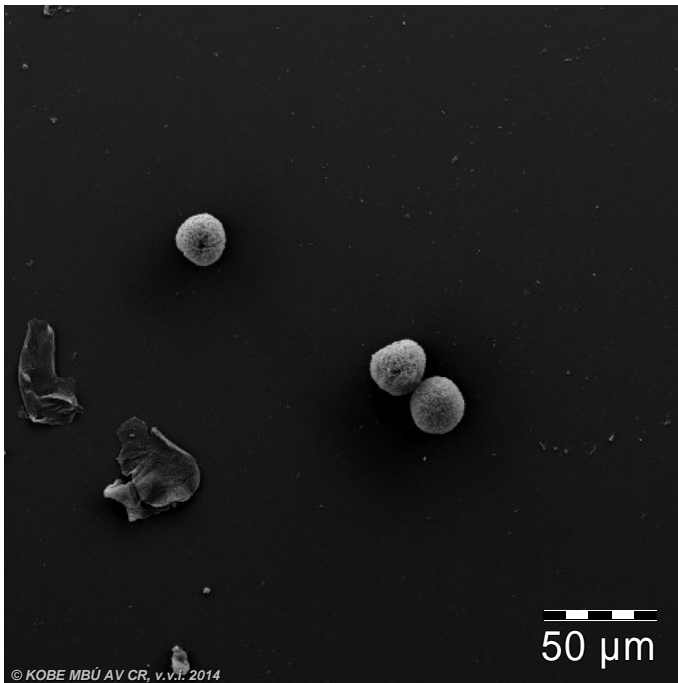
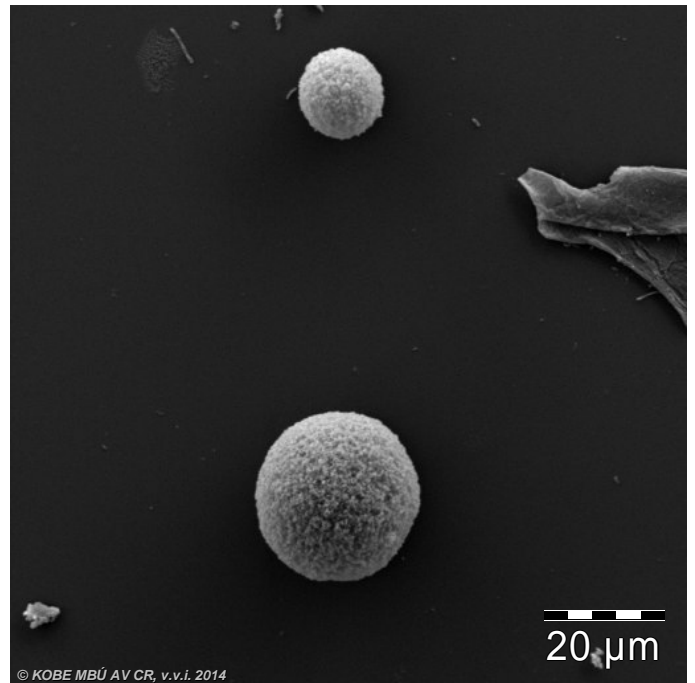


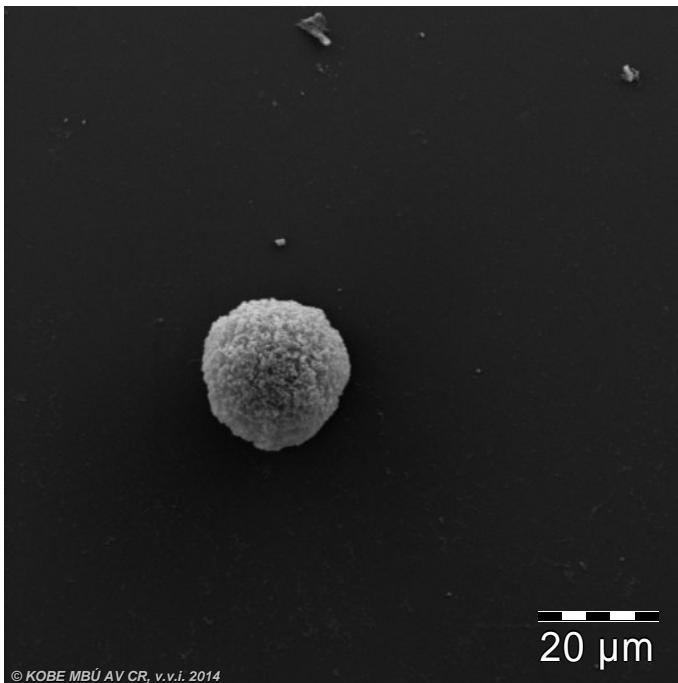
580/1 - POROS ctrl; Fig.: 01.bmp



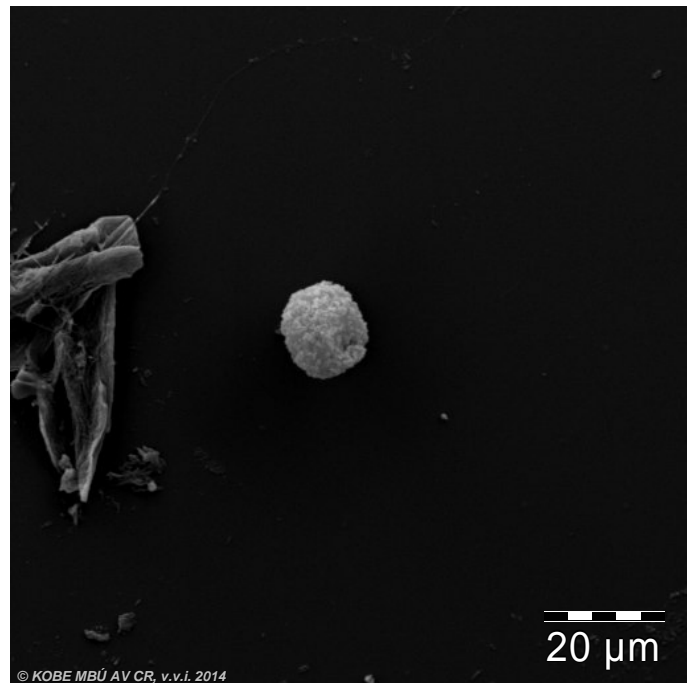
580/1 - POROS ctrl; Fig.: 02.bmp



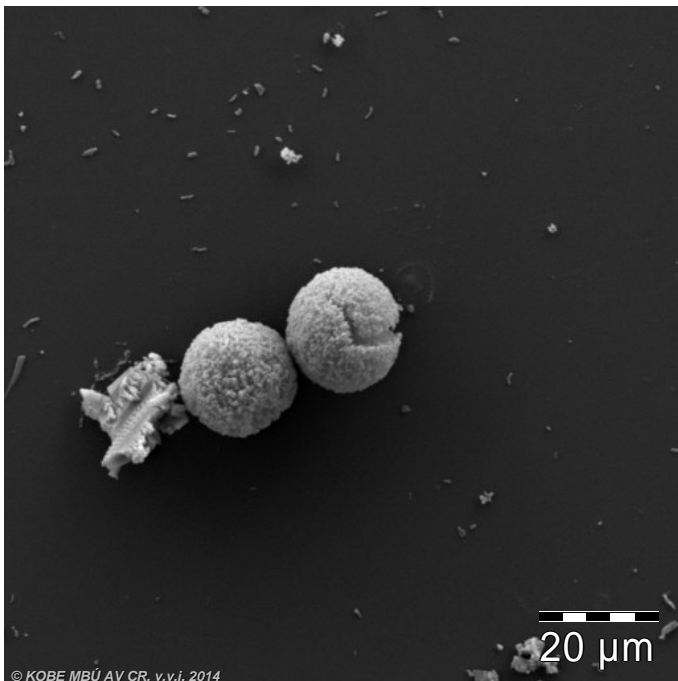
580/6 - POROS - 5500psi; Fig.: 03.bmp



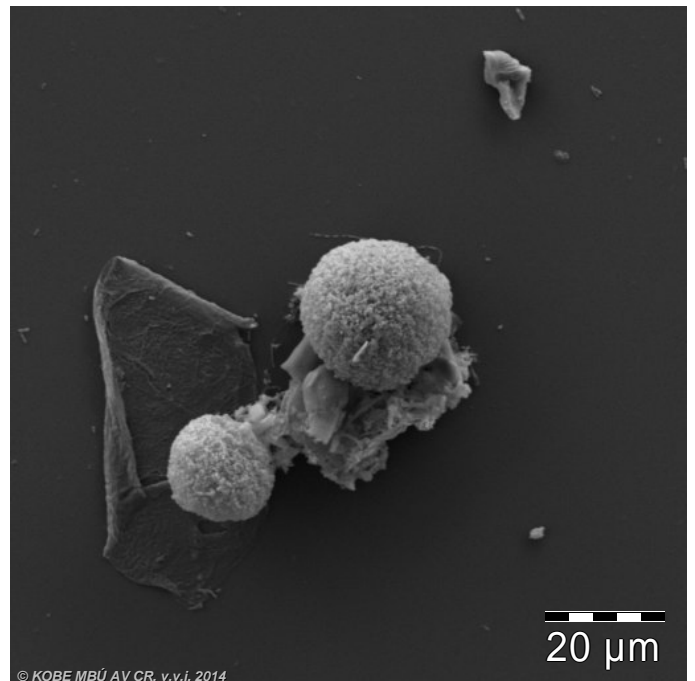
580/6 - POROS - 5500psi; Fig.: 04.bmp

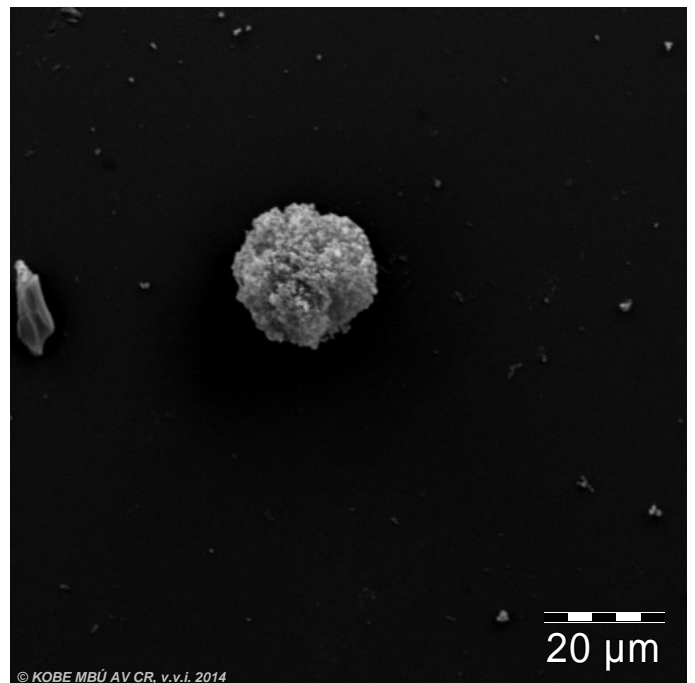
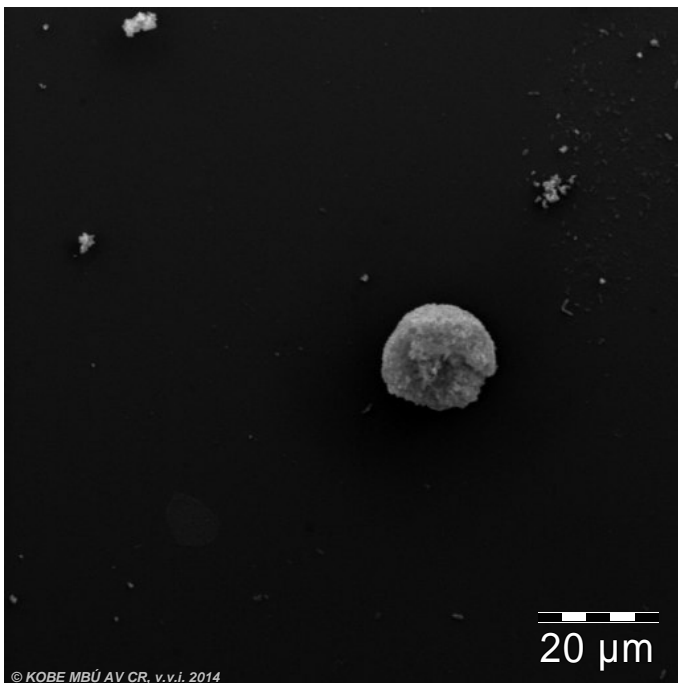


580/6 - POROS - 5500psi; Fig.: 05.bmp

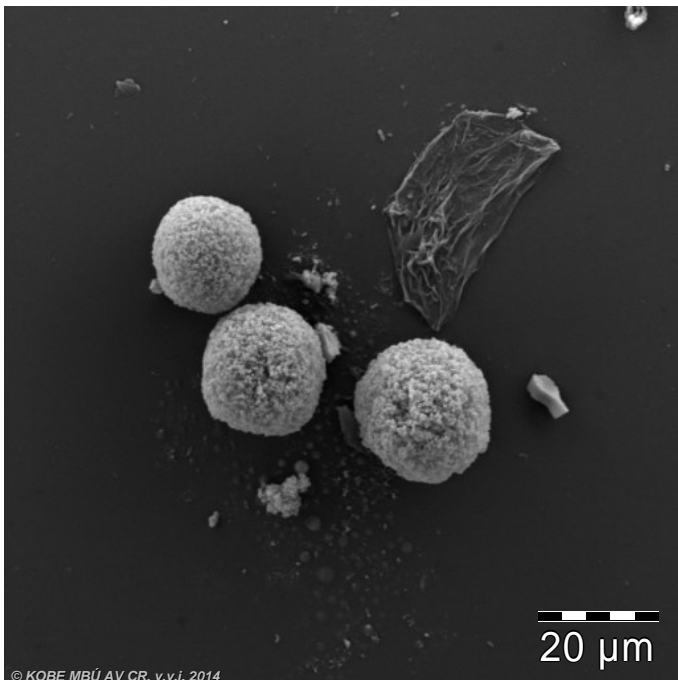


580/6 - POROS - 5500psi; Fig.: 06.bmp

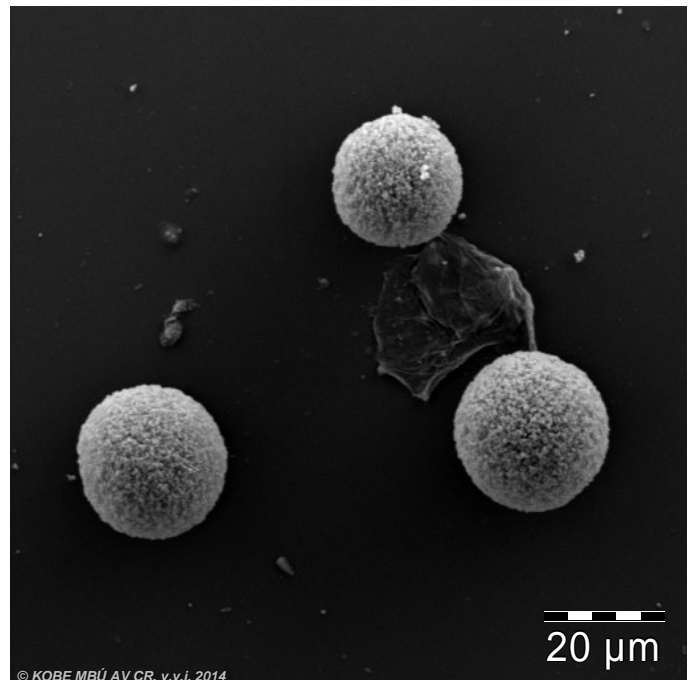




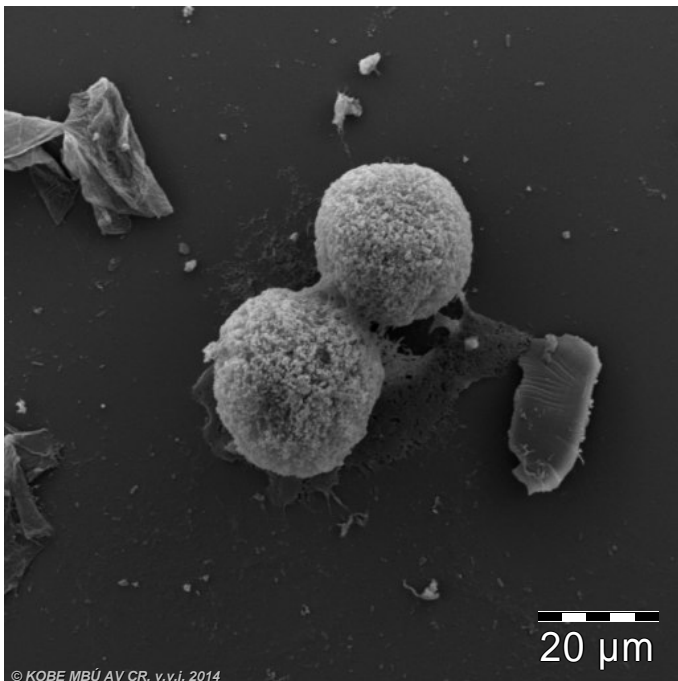
580/3-POROS-irN new; Fig.: 09.bmp



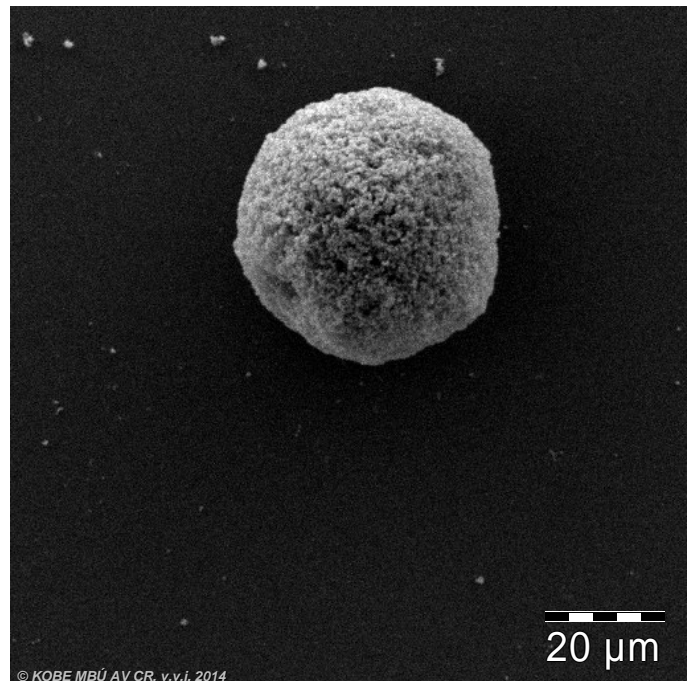
580/3-POROS-irN new; Fig.: 10.bmp



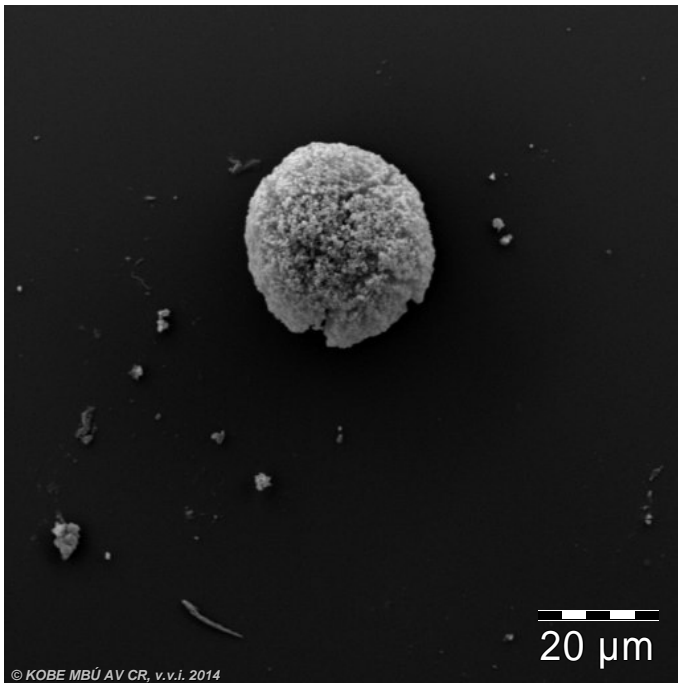
580/4-POROS-iP used; Fig.: 11.bmp



580/4-POROS-iP used; Fig.: 12.bmp



580/5-POROS-irN used; Fig.: 13.bmp



580/5-POROS-irN used; Fig.: 14.bmp

